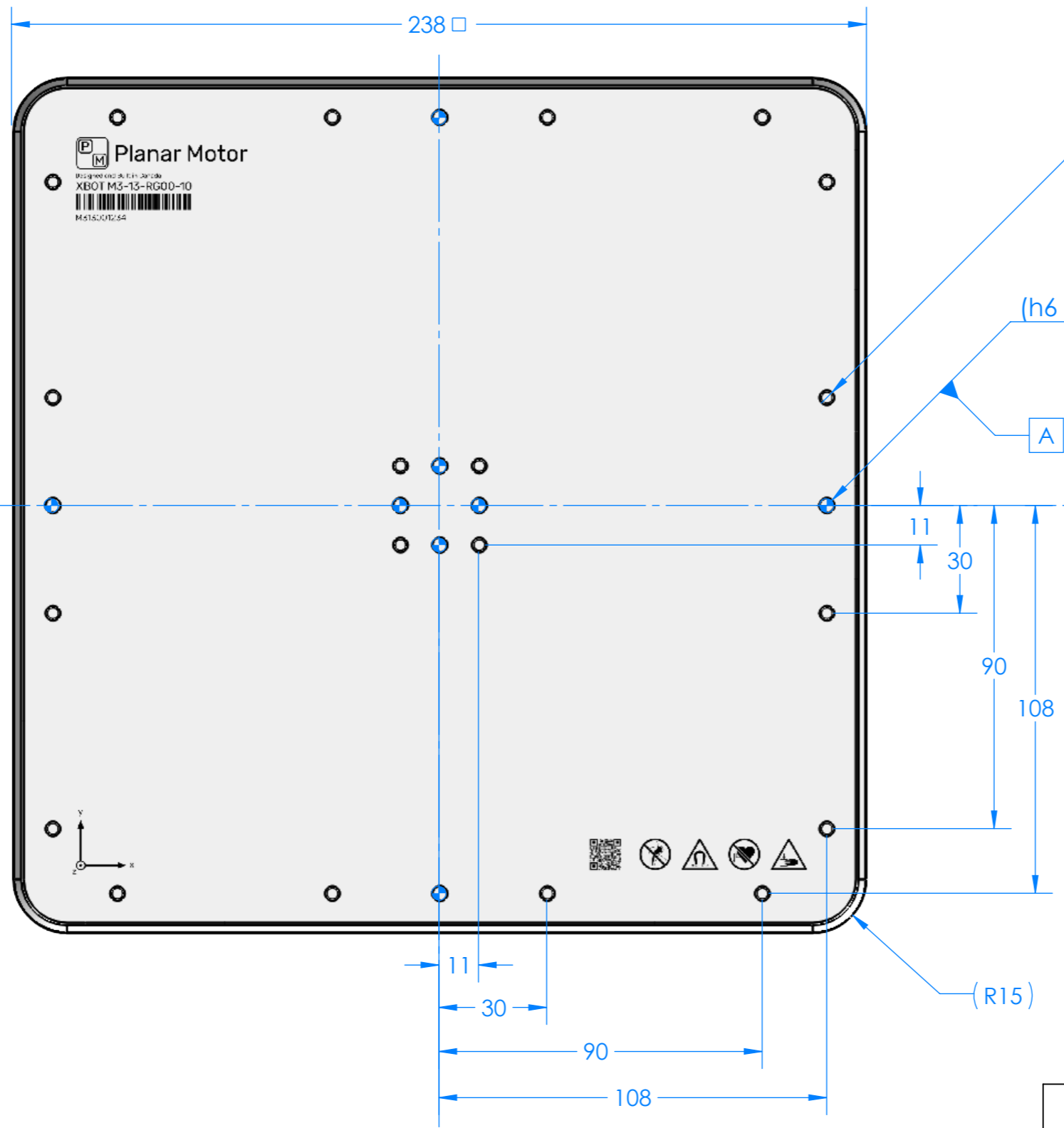


NOTES:

1. Exterior material - 300-Series SS
2. Weld line may protrude or be visible near mid-line of XBOT



20X M4X0.7 ∇ 3.5

8X ϕ 4.000 $\begin{matrix} (+0.012) \\ (0.000) \end{matrix}$ ∇ 5
 (h6 or h7 dowels recommended)

∇ SYMMETRY
 set by A

11
 30
 90
 108

11
 30
 90
 108

∇ SYMMETRY
 set by A

(R15)

(R4)

8.50



<p>PRODUCT DRAWING</p>		Dimensions and tolerances per ASME Y14.5M-1994 Surface texture per ANSI/ASME B46 1-1985			
		Product dimensions subject to change			
Model XBOT M3-13-RG00-10		Dwg. No. M3-13-RG00-10-OEM		Rev. 0.1	
Planar Motor Incorporated - Vancouver, Canada					
Issue Date 2026-05-12	Projection 	Dimension mm	Size A3	Scale 2:3	Sheet 1/1