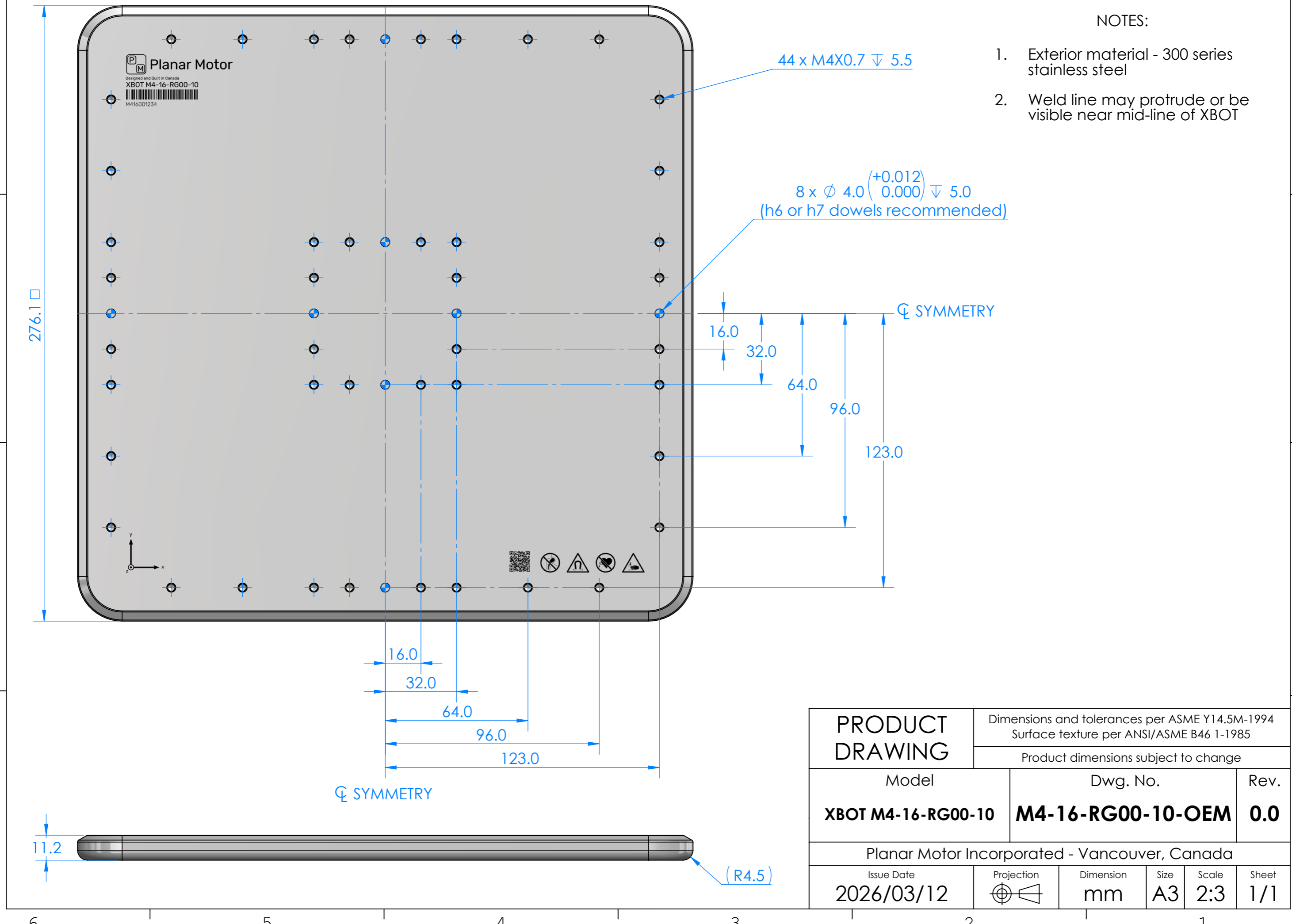


NOTES:

1. Exterior material - 300 series stainless steel
2. Weld line may protrude or be visible near mid-line of XBOT



<b>PRODUCT DRAWING</b>		Dimensions and tolerances per ASME Y14.5M-1994 Surface texture per ANSI/ASME B46 1-1985			
		Product dimensions subject to change			
Model		Dwg. No.		Rev.	
<b>XBOT M4-16-RG00-10</b>		<b>M4-16-RG00-10-OEM</b>		<b>0.0</b>	
Planar Motor Incorporated - Vancouver, Canada					
Issue Date	Projection	Dimension	Size	Scale	Sheet
2026/03/12		mm	A3	2:3	1/1