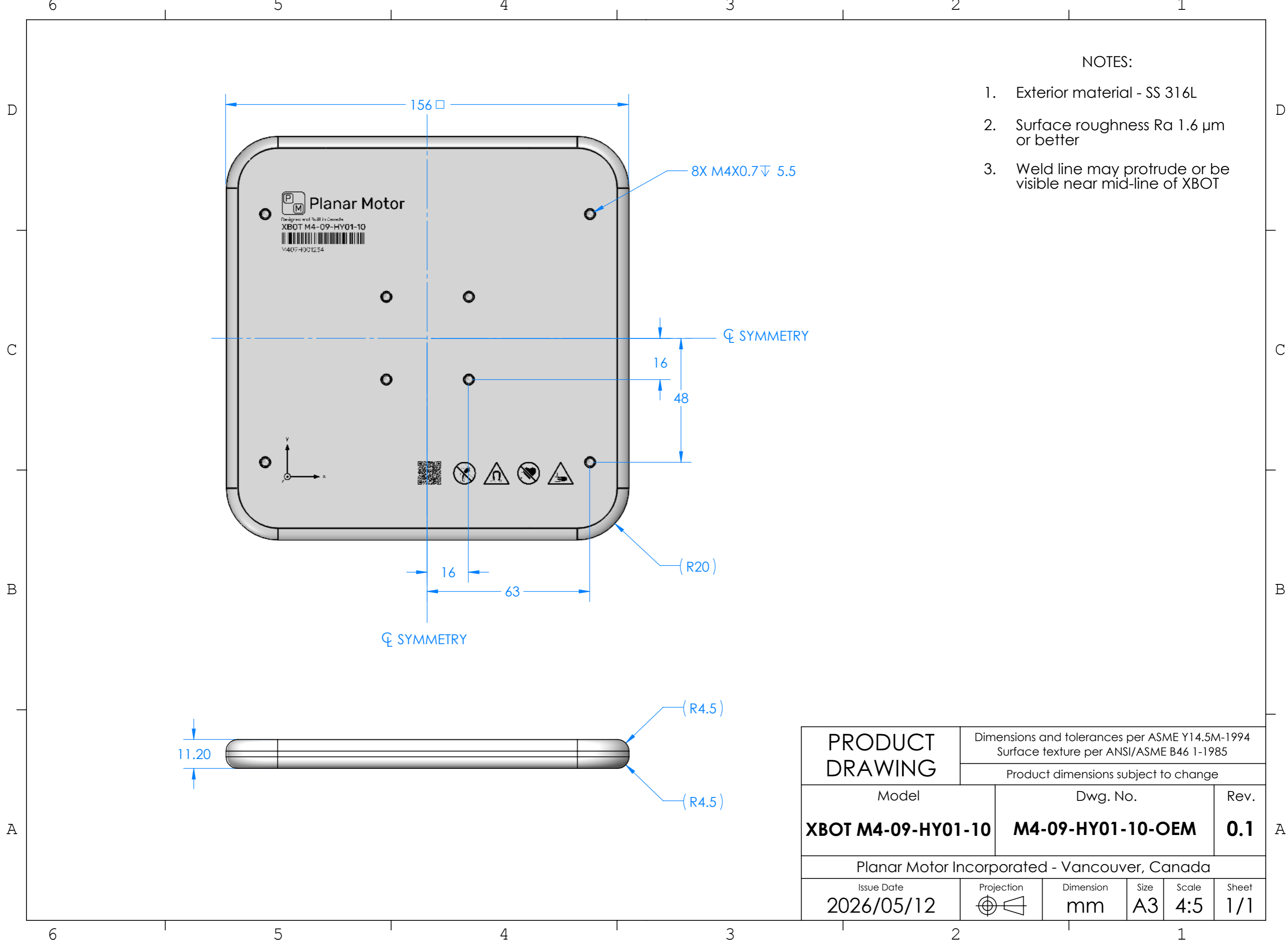


PROPRIETARY AND COPYRIGHT, PLANAR MOTOR INCORPORATED  
 THE INFORMATION CONTAINED IN THIS DRAWING IS THE SOLE PROPERTY OF PLANAR MOTOR INCORPORATED AND ANY  
 REPRODUCTION IN PART OR AS A WHOLE WITHOUT THE WRITTEN PERMISSION OF PLANAR MOTOR INCORPORATED IS PROHIBITED.



NOTES:

1. Exterior material - SS 316L
2. Surface roughness Ra 1.6 μm or better
3. Weld line may protrude or be visible near mid-line of XBOT

<b>PRODUCT DRAWING</b>		Dimensions and tolerances per ASME Y14.5M-1994 Surface texture per ANSI/ASME B46 1-1985				
		Product dimensions subject to change				
Model		Dwg. No.		Rev.		
<b>XBOT M4-09-HY01-10</b>		<b>M4-09-HY01-10-OEM</b>		<b>0.1</b>		
Planar Motor Incorporated - Vancouver, Canada						
Issue Date		Projection	Dimension	Size	Scale	Sheet
2026/05/12			mm	A3	4:5	1/1