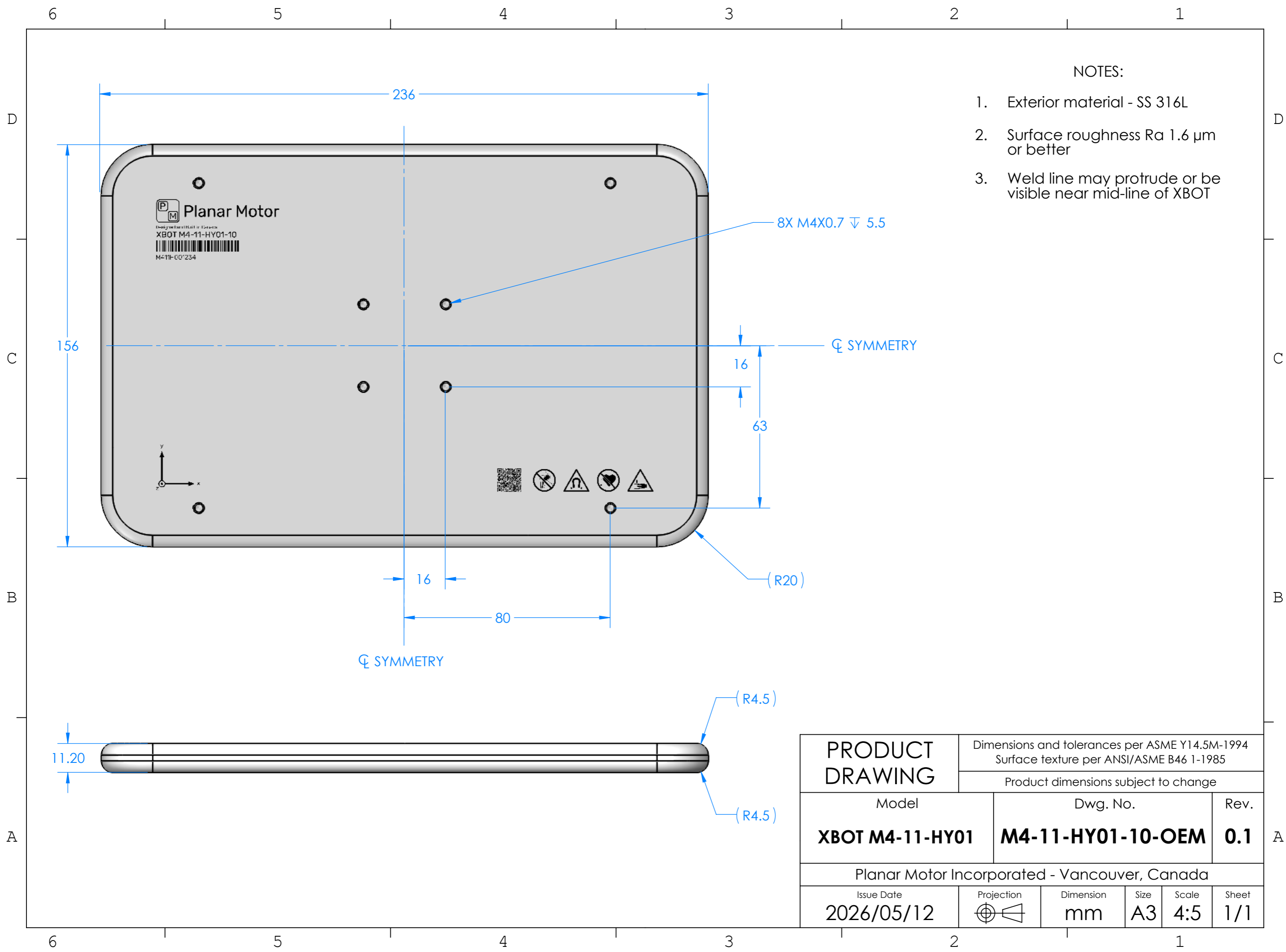


PROPRIETARY AND COPYRIGHT, PLANAR MOTOR INCORPORATED  
 THE INFORMATION CONTAINED IN THIS DRAWING IS THE SOLE PROPERTY OF PLANAR MOTOR INCORPORATED AND ANY  
 REPRODUCTION IN PART OR AS A WHOLE WITHOUT THE WRITTEN PERMISSION OF PLANAR MOTOR INCORPORATED IS PROHIBITED.



NOTES:

1. Exterior material - SS 316L
2. Surface roughness Ra 1.6 μm or better
3. Weld line may protrude or be visible near mid-line of XBOT

8X M4X0.7  $\nabla$  5.5

☉ SYMMETRY

(R20)

☉ SYMMETRY

(R4.5)

(R4.5)

<b>PRODUCT DRAWING</b>		Dimensions and tolerances per ASME Y14.5M-1994 Surface texture per ANSI/ASME B46 1-1985			
		Product dimensions subject to change			
Model <b>XBOT M4-11-HY01</b>		Dwg. No. <b>M4-11-HY01-10-OEM</b>		Rev. <b>0.1</b>	
Planar Motor Incorporated - Vancouver, Canada					
Issue Date 2026/05/12		Projection 	Dimension mm	Size A3	Scale 4:5
				Sheet 1/1	