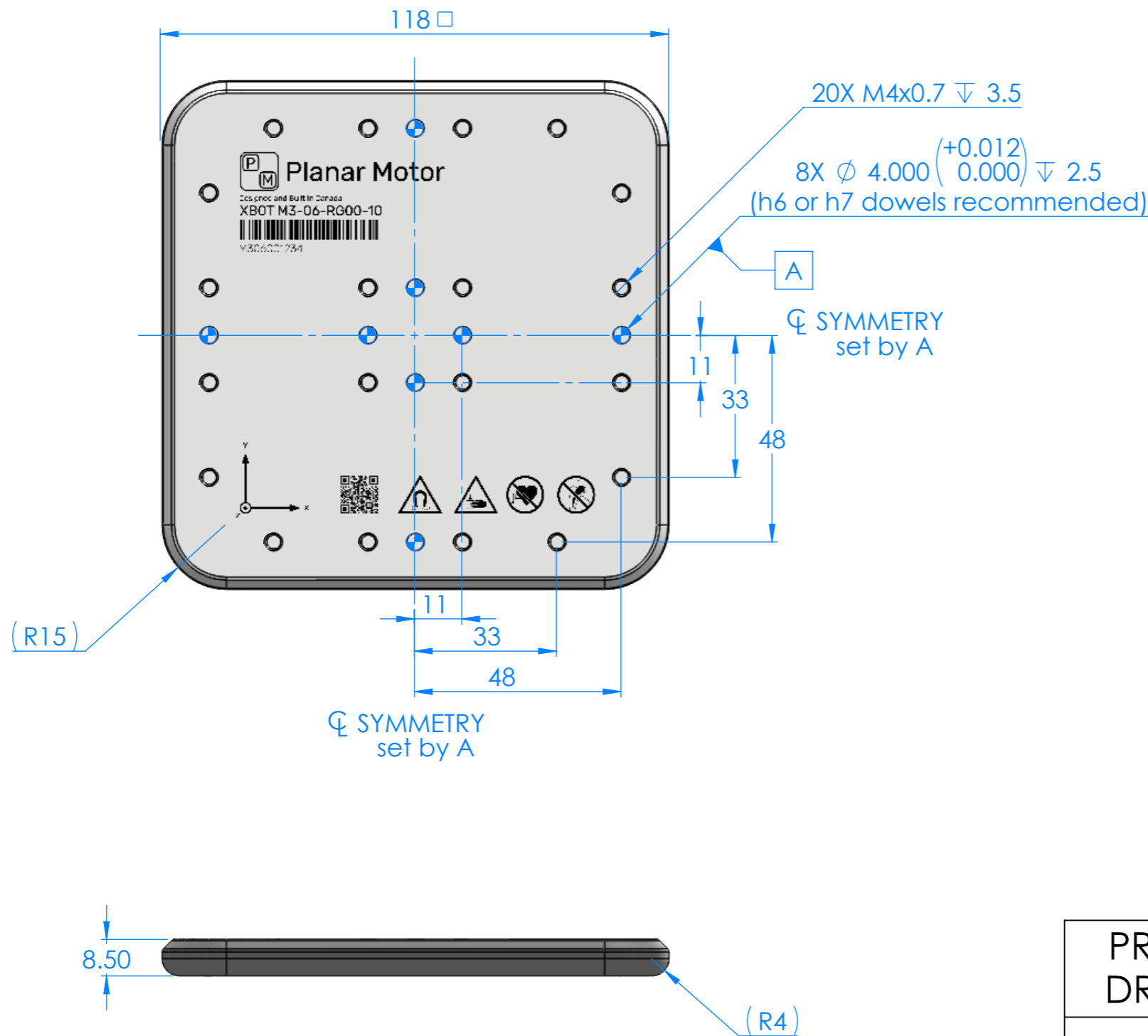


NOTES:

1. Exterior material - 300-Series SS
2. Weld line may protrude or be visible near mid-line of XBOT



PRODUCT DRAWING	Dimensions and tolerances per ASME Y14.5M-1994 Surface texture per ANSI/ASME B46 1-1985				
	Product dimensions subject to change				
Model	Dwg. No.		Rev.		
XBOT M3-06-RG00-10	M3-06-RG00-10-OEM		0.1		
Planar Motor Incorporated - Vancouver, Canada					
Issue Date	Projection	Dimension	Size	Scale	Sheet
2026-05-20		mm	A3	4:5	1/1