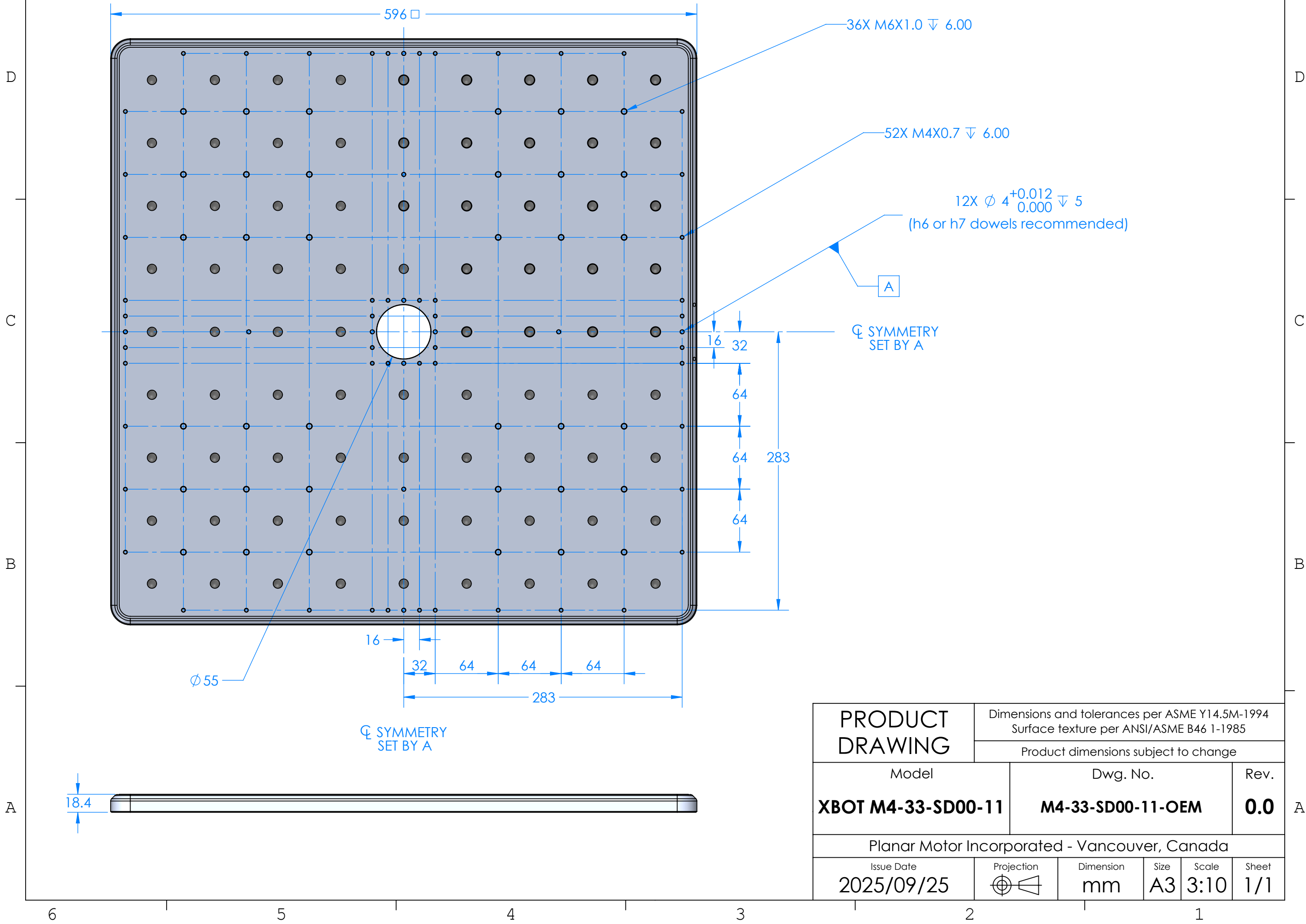
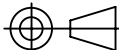


PROPRIETARY AND COPYRIGHT, PLANAR MOTOR INCORPORATED
THE INFORMATION CONTAINED IN THIS DRAWING IS THE SOLE PROPERTY OF PLANAR MOTOR INCORPORATED AND ANY
REPRODUCTION IN PART OR AS A WHOLE WITHOUT THE WRITTEN PERMISSION OF PLANAR MOTOR INCORPORATED IS PROHIBITED.

Planar Motor



| | | | | | |
|---|--|-----------|------|------------|-------|
| PRODUCT DRAWING | Dimensions and tolerances per ASME Y14.5M-1994 Surface texture per ANSI/ASME B46 1-1985 | | | | |
| | Product dimensions subject to change | | | | |
| Model | Dwg. No. | | | Rev. | |
| XBOT M4-33-SD00-11 | M4-33-SD00-11-OEM | | | 0.0 | |
| Planar Motor Incorporated - Vancouver, Canada | | | | | |
| Issue Date | Projection | Dimension | Size | Scale | Sheet |
| 2025/09/25 |  | mm | A3 | 3:10 | 1/1 |